



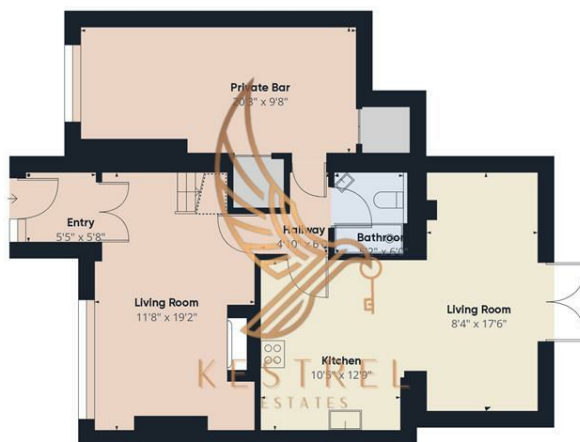
112 SL, 112 Smithies Lane, Barnsley, South Yorkshire, S71 1NL

This stunning 4-bedroom, double-fronted, extended house, provides sophistication & comfort. It also has its own private bar.

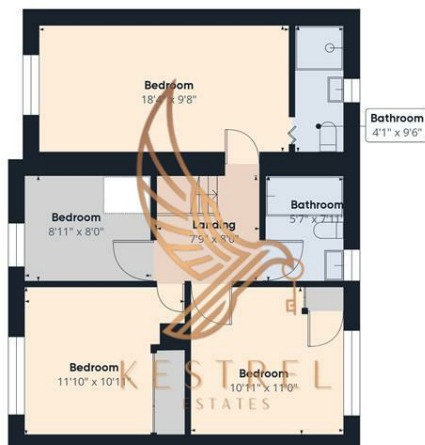
Spacious Bedrooms, Double-Fronted Design, Private Bar, Ample Parking, Ideal for Families and Entertainers

Contact us today to book a viewing

£1,000 Per Month



Floor 0



Floor 1



Approximate total area^{RM}
1449.07 ft²

Reduced headroom
8.53 ft²

Excluding balconies and terraces

Reduced headroom
(below 1.5m/4.92ft)

While every attempt has been made to ensure accuracy, all measurements are approximate, not to scale. This floor plan is for illustrative purposes only.

GIRAFFE360

